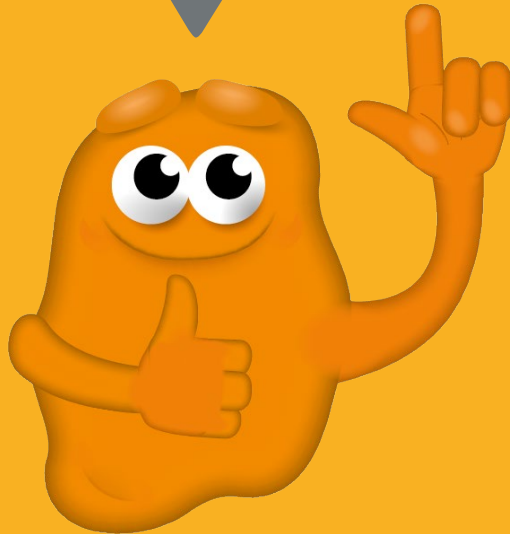


# CUBE IN PERSPECTIVE

**Good luck and have fun  
with this lesson!**



## LESSON PLAN: CUBE IN PERSPECTIVE

- Age: from age 10
- Learning area: Math
- Duration: 10 min
- Preparation time: 40 min

# CUBE IN PERSPECTIVE

## WHAT DO YOU NEED?

- Street chalk paint like Creall Street chalk paint
- Large rulers or tape measures
- Examples (images) of cubes

## WHAT WILL YOU BE DOING?

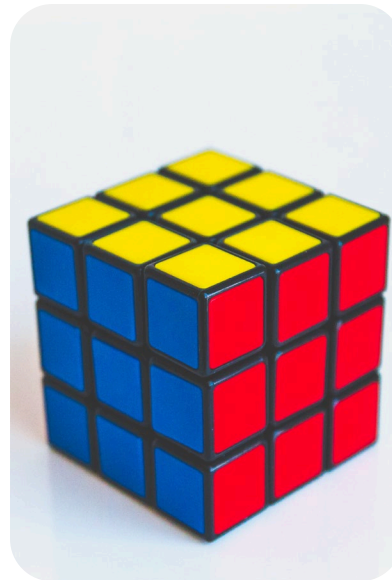
You will be painting a cube in perspective.



# CUBE IN PERSPECTIVE

## STEP 1

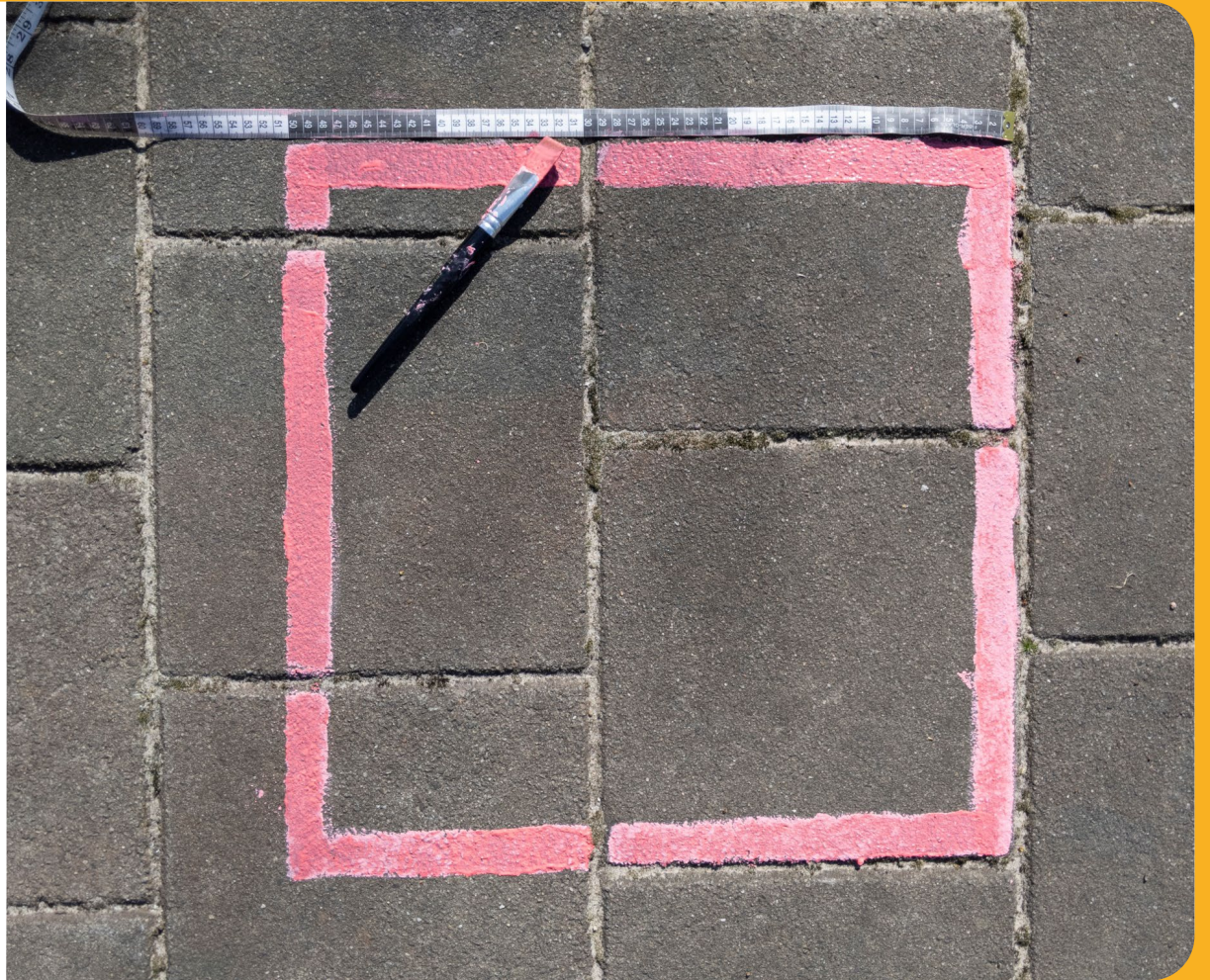
Take a good look at the shape and the perspectival lines. If you think it will help, you can also take notes or make a draft version. You can bring this outside later.



# CUBE IN PERSPECTIVE

## STEP 2

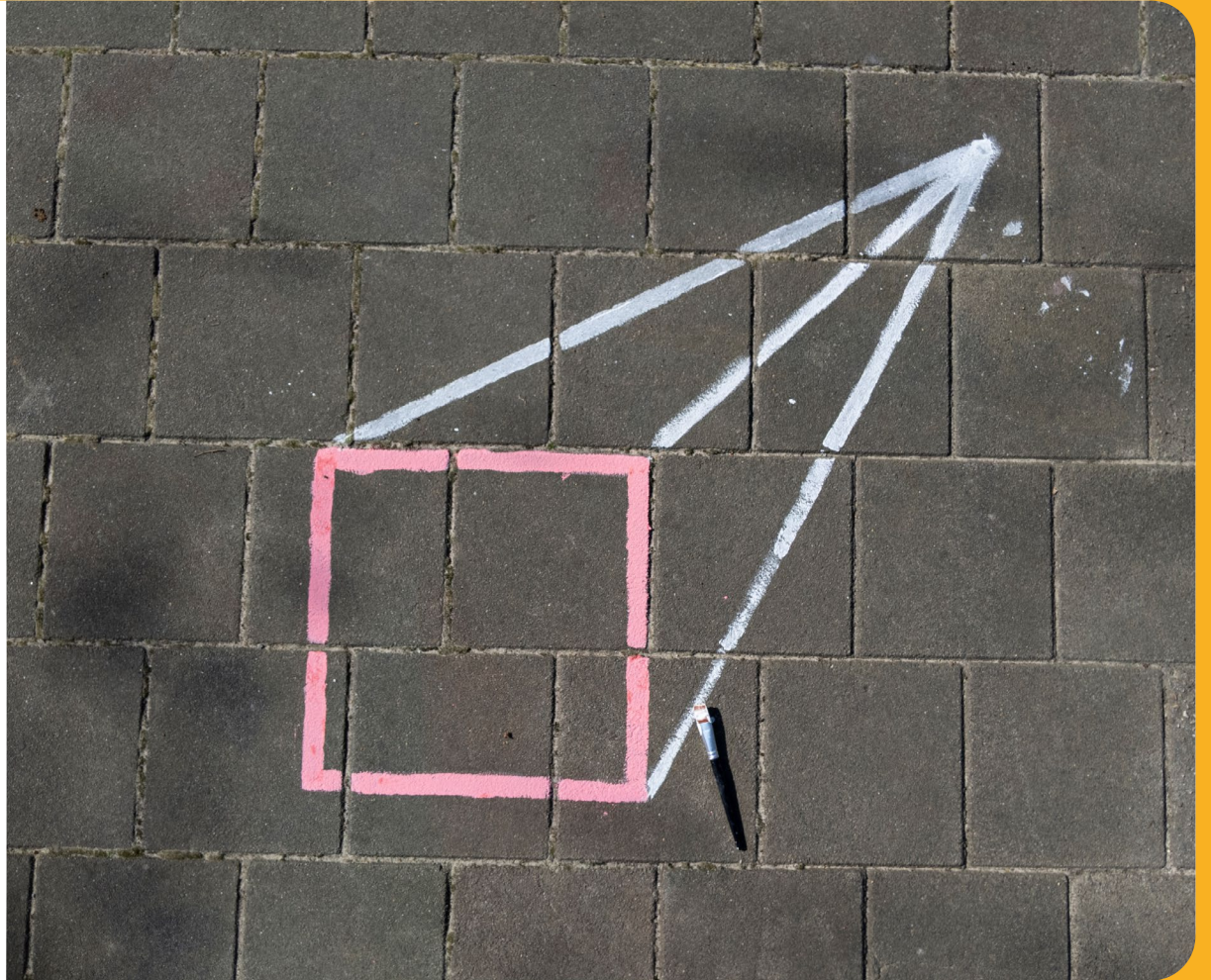
Think of how high, deep and wide your cube should be. Paint the front of your cube in the schoolyard in one colour. Use the tape measure or large ruler to measure and draw your cube.



# CUBE IN PERSPECTIVE

## STEP 3

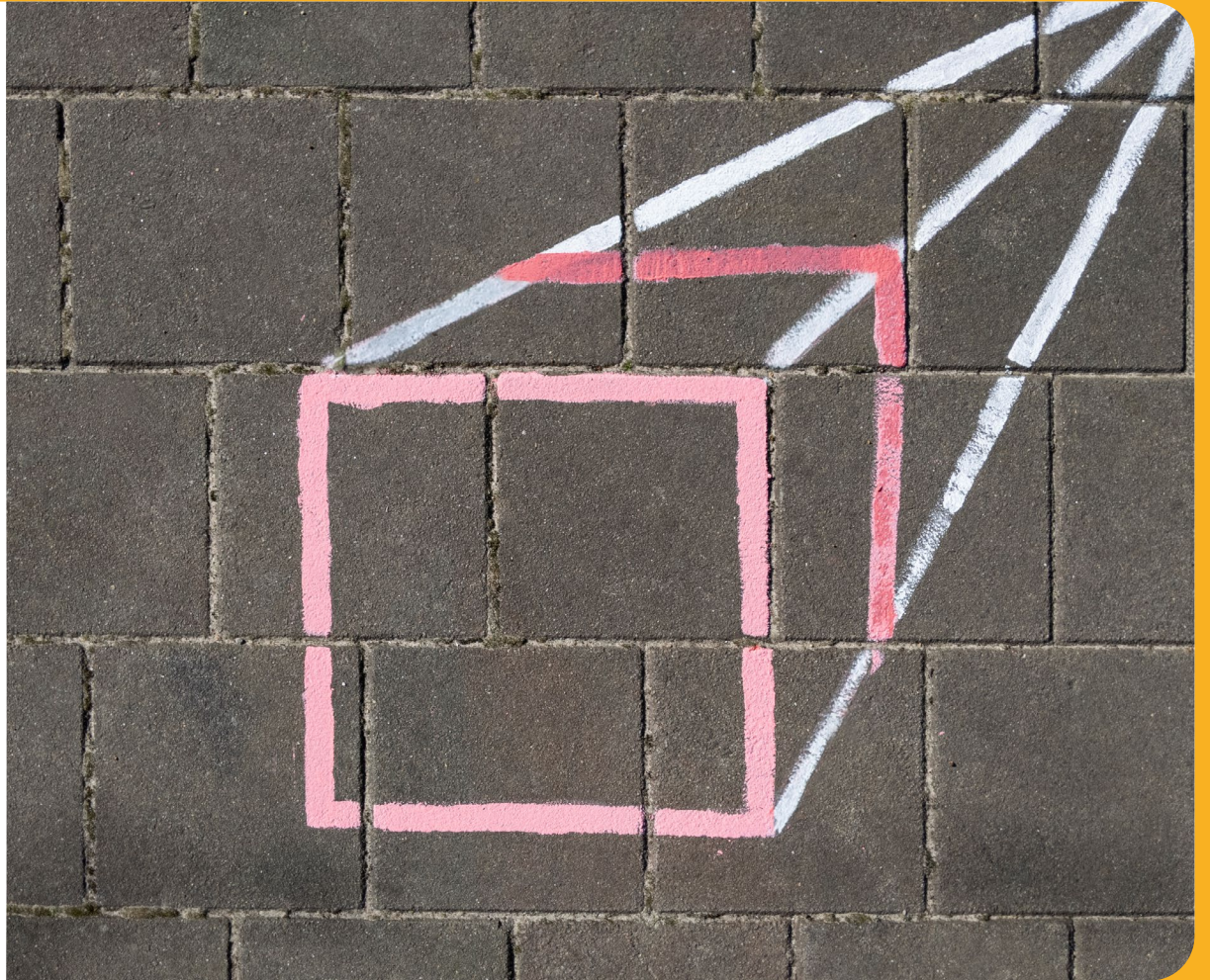
In another colour, also paint the dot: the vanishing point.  
Next, draw lines in the same colour from the dot to the 4 corners of the front side of your cube. These are the perspectival lines.



# CUBE IN PERSPECTIVE

## STEP 4

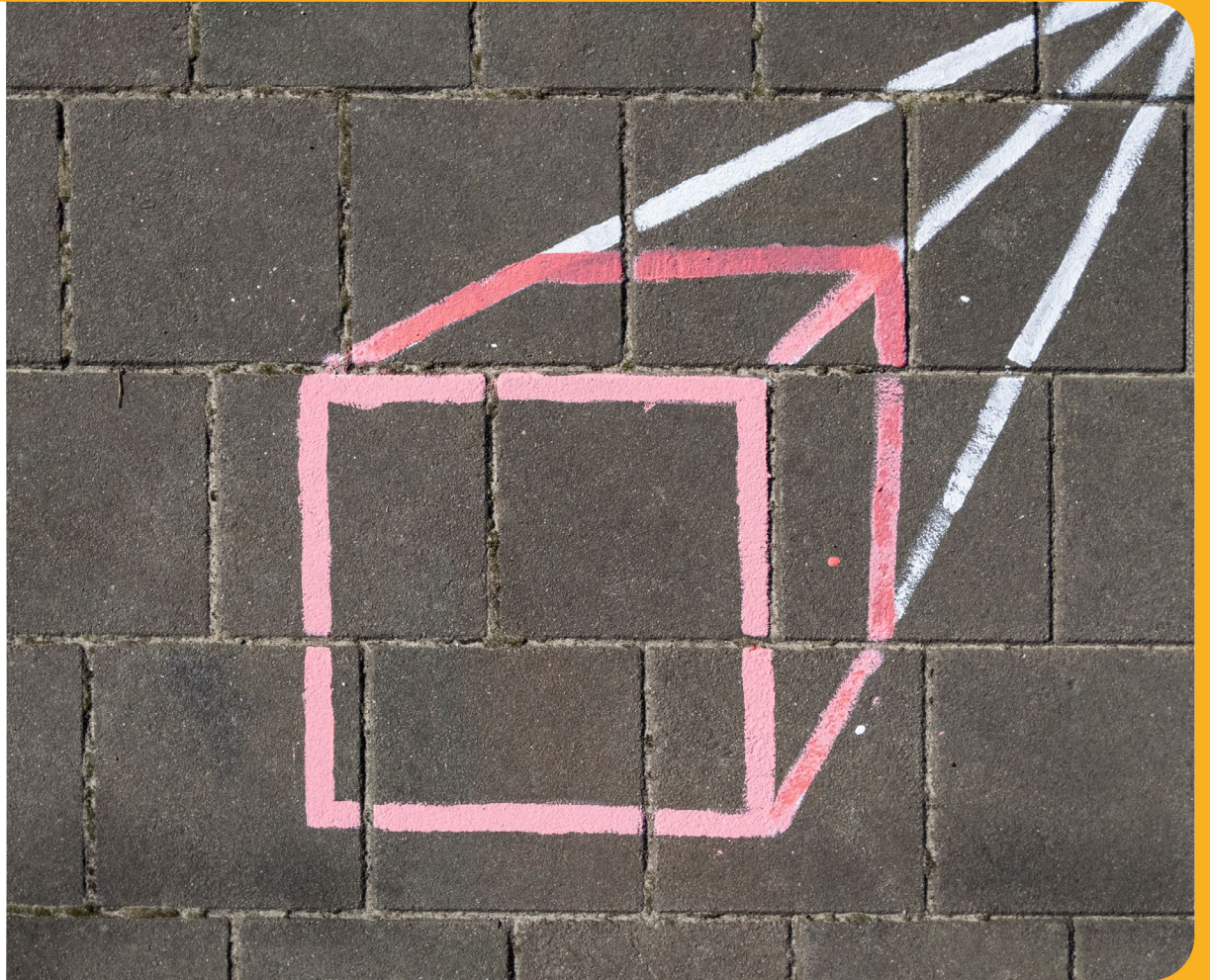
Paint a vertical line and a horizontal line between the white lines.



# CUBE IN PERSPECTIVE

## STEP 5

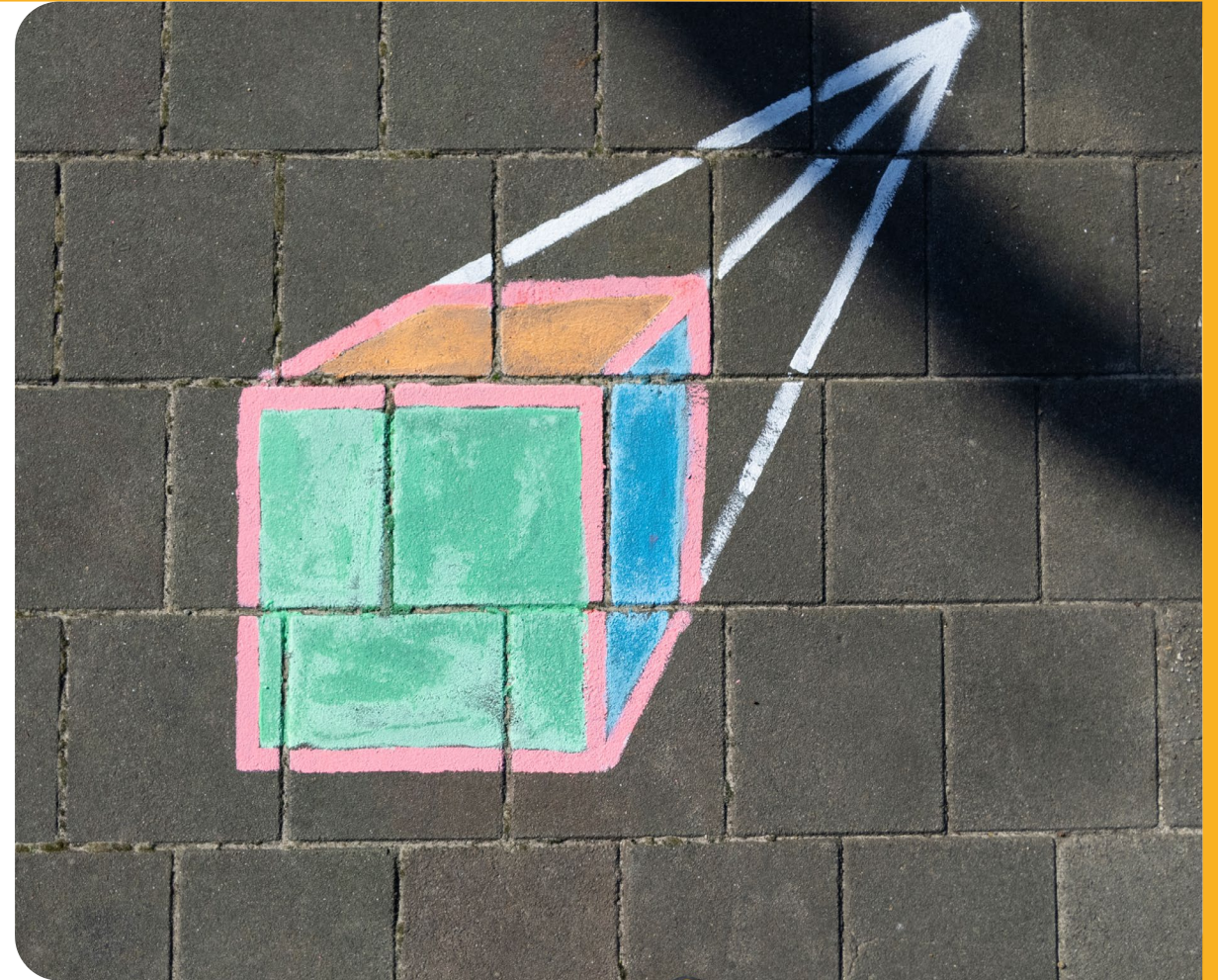
Paint with the cube colour over the perspectival lines within the cube. This is how you will make the top and side of the cube.



# CUBE IN PERSPECTIVE

## STEP 6

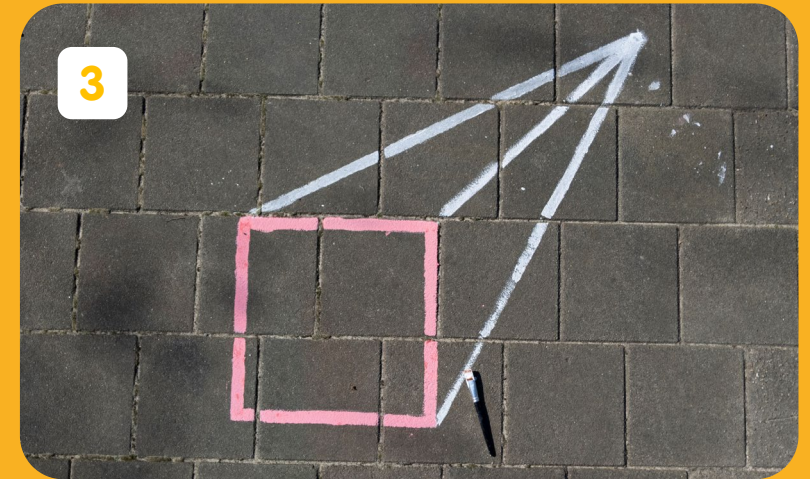
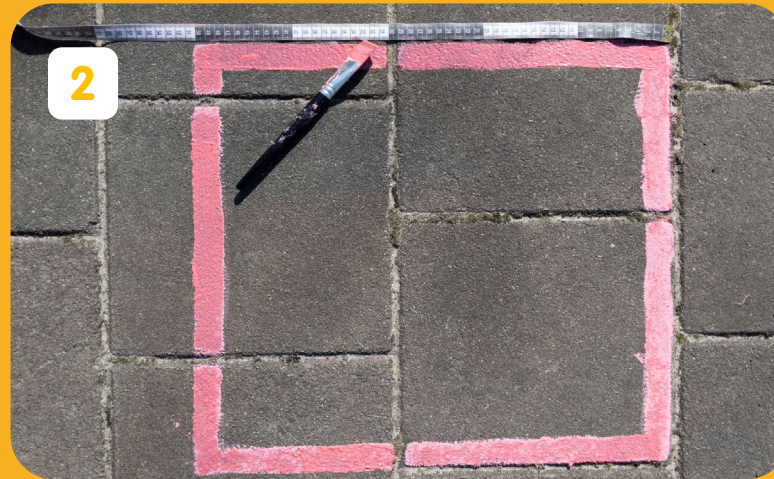
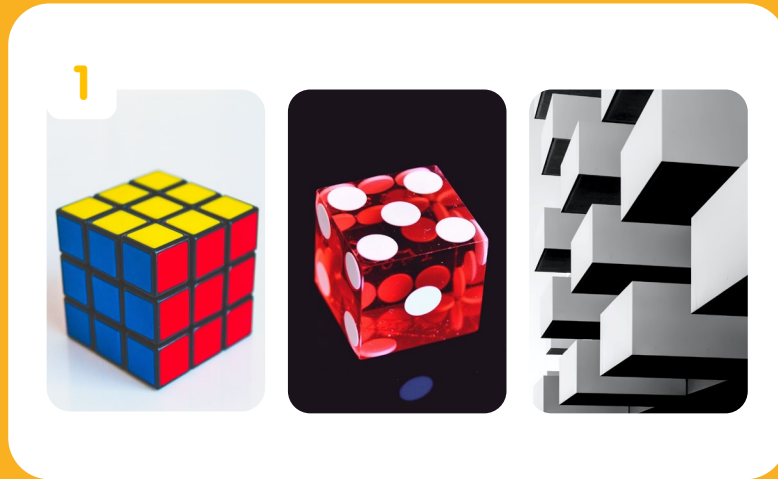
Finish your cube by painting it with various colours.





# CUBE IN PERSPECTIVE

## Step-by-step instructions



IT'S MORE FUN WITH YOU!

Good job!

