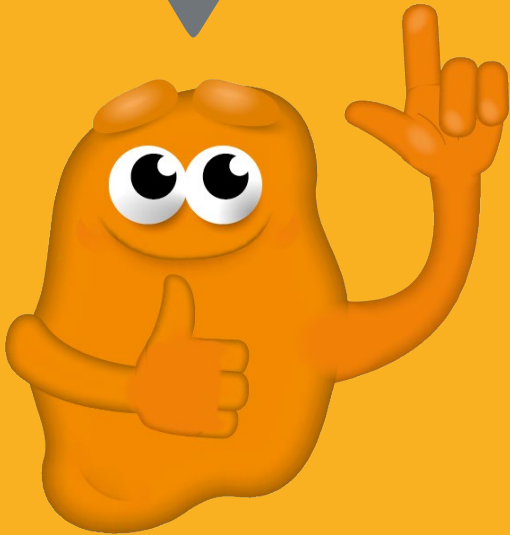


WHAT GROWS FROM THE EGG?

**Good luck and have fun
with this lesson!**



LESSON PLAN: WHAT GROWS FROM THE EGG?

- Age: from age 6
- Learning area: world studies, nature
- Preparation time: 10 min
- Duration: 30 – 40 min

WHAT GROWS FROM THE EGG?

WHAT DO YOU NEED?

- A3 drawing paper
- White round paper
- White, brown and yellow poster paint such as Creall Dacta colour
- Thick brushes such as Creall Kids brush balloon
- Coloured paper
- Scissors
- Adhesive tape
- Glue

WHAT WILL YOU BE DOING?

Do you know who comes out of an egg? And how is that possible? That's what we're going to discover today.



WHAT GROWS FROM THE EGG?

STEP 1

The teacher tells you about the chicken and the egg. Then you get to work. Tape your drawing paper to the table.

Turn your paintbrush around: we're going to paint with the back side today. Dip your brush into the brown paint and make circular movements on the drawing paper. This is how you'll make the eggs.



WHAT GROWS FROM THE EGG?

STEP 2

Take the white round paper. With yellow paint, make circular movements again. A chick will now appear in this egg.

Stick the egg with the chick next to the eggs you painted in step 1.



WHAT GROWS FROM THE EGG?

STEP 3

Paint a chicken next to the egg with the chick. Do this again by making large circular movements with the back of your brush. This is the chicken.



WHAT GROWS FROM THE EGG?

STEP 4

Cut out eyes, legs and a beak for the chick from coloured paper. Stick these on the chick with glue.

Also cut out eyes, a beak and a crest for the chicken. Glue them in the right place on the chicken. Then paint legs for the chicken. You can also paint the surroundings of the chicken and the eggs.



WHAT GROWS FROM THE EGG?

Step-by-step instructions

1



2



3



4



IT'S MORE FUN WITH YOU!

Good job!

